

**2. Greater Los Angeles County Vector Control District Initiatives Presentation**

Recommendation:

No action required by City Council. This is a presentation only.

## **City Council Agenda Report**

Meeting Date: April 1, 2025  
From: Freddie Agyin, Director of Health and Environmental Control  
Department: Health and Environmental Control  
Submitted by: Dulce Gonzalez, Management Analyst

### **Subject**

Greater Los Angeles County Vector Control District Initiatives Presentation

### **Recommendation**

No action required by City Council. This is a presentation only.

### **Background**

Since its establishment in 1952, the Greater Los Angeles County Vector Control District (GLACVCD) has played a vital role in serving the Greater Los Angeles area, which includes 36 cities and unincorporated areas. In 2017, GLACVCD began offering contract vector control services to the City of Vernon (City), and on November 3, 2020, the City Council officially approved the City's annexation into GLACVCD.

GLACVCD is committed to safeguarding public health by tackling the challenges posed by various pests, such as mosquitoes, ticks, flies, and other vectors. The District primarily focuses on monitoring, managing, and mitigating the spread of these pests, which present significant risks to public health, safety, and overall quality of life.

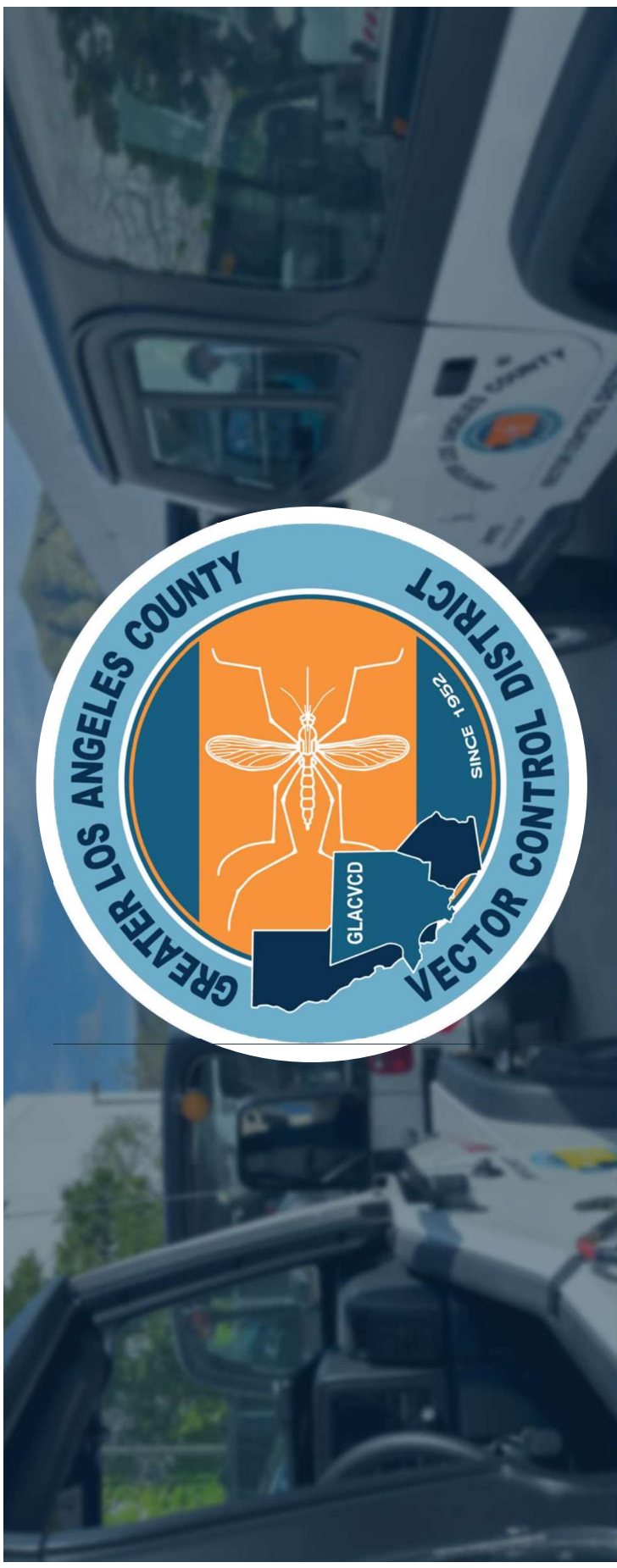
A representative from the District will provide a presentation on GLACVCD's services to City Council at the April 1, 2025 Council Meeting.

### **Fiscal Impact**

There is no fiscal impact associated with this report.

### **Attachments**

1. GLACVCD Presentation



## GREATER LA COUNTY VECTOR CONTROL DISTRICT

David Pailin Jr. | Communications Manager | [GLAmosquito.org](http://GLAmosquito.org)

# About Our District

We are the largest of 5 vector control special districts servicing LA County, with our current cost per single family home being \$18.97 annually.



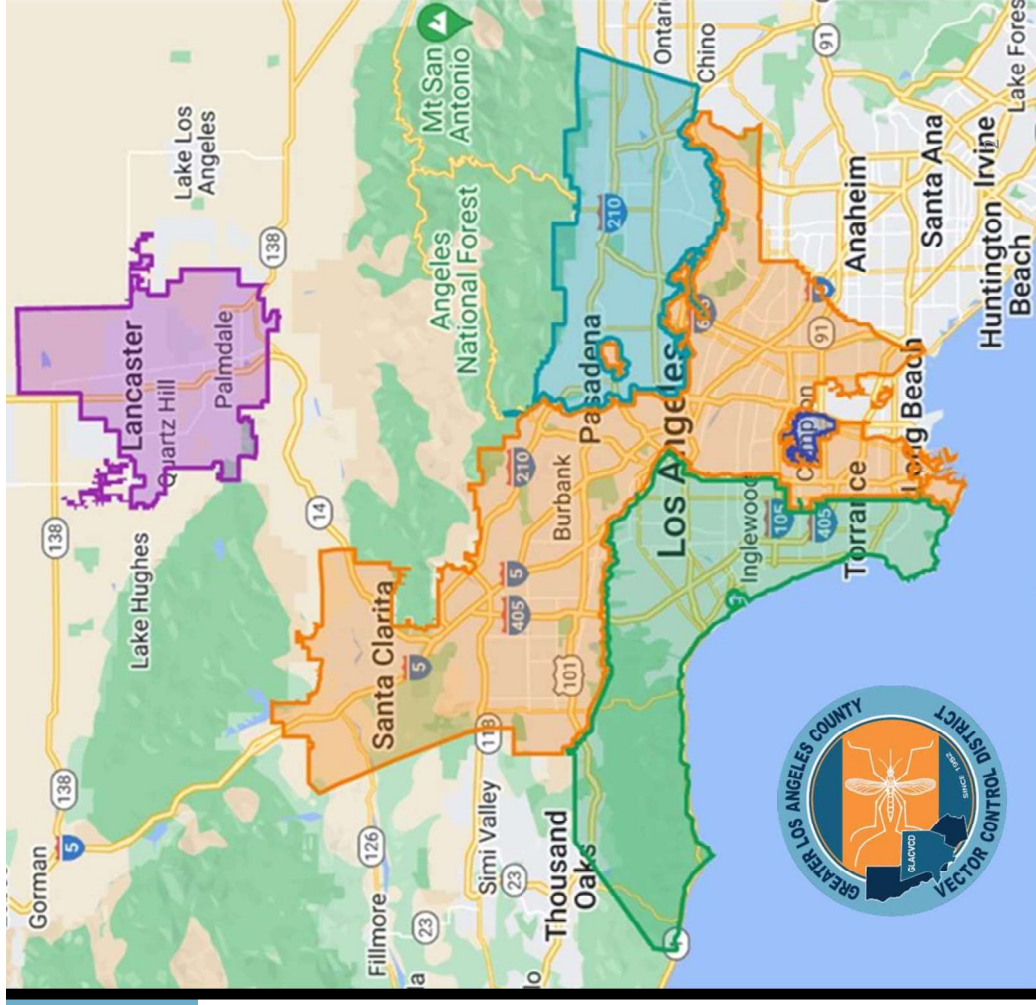
Mosquitoes



Black Fly



Midge



# Mosquito-borne Diseases in Vernon

## Dengue Fever Growing Threat

- 140 Travel-associated cases in GLACVCD jurisdiction
- 3 Locally acquired cases in GLACVCD
- 14 cases in LA County

## West Nile virus (WNV) Continuous Problem

## Saint Louis Encephalomyelitis (SLE) Occasionally Detected





# Integrated Vector Management (IVM)



Surveillance



Control



Education



*“Our departments control mosquitoes through surveillance, management, education, & outreach”*

# Operations | High Visibility

## Service Request Response

- Phone
- Website

## Mosquito-borne Disease Case Response (*Aedes*)

- Door-to-door yard inspections
- Control efforts



# Operations | Medium Visibility

Vector Control Specialist (VCS)  
Single Routes

- Public sources

Swimming Pool Program

Street Gutters





# Operations | Medium Visibility

Vector Control Specialist (VCS)  
Single Routes

- Public sources

Swimming Pool Program

Street Gutters



# Operations | Medium Visibility

Vector Control Specialist (VCS)  
Single Routes

- Public sources

Swimming Pool Program

Street Gutters

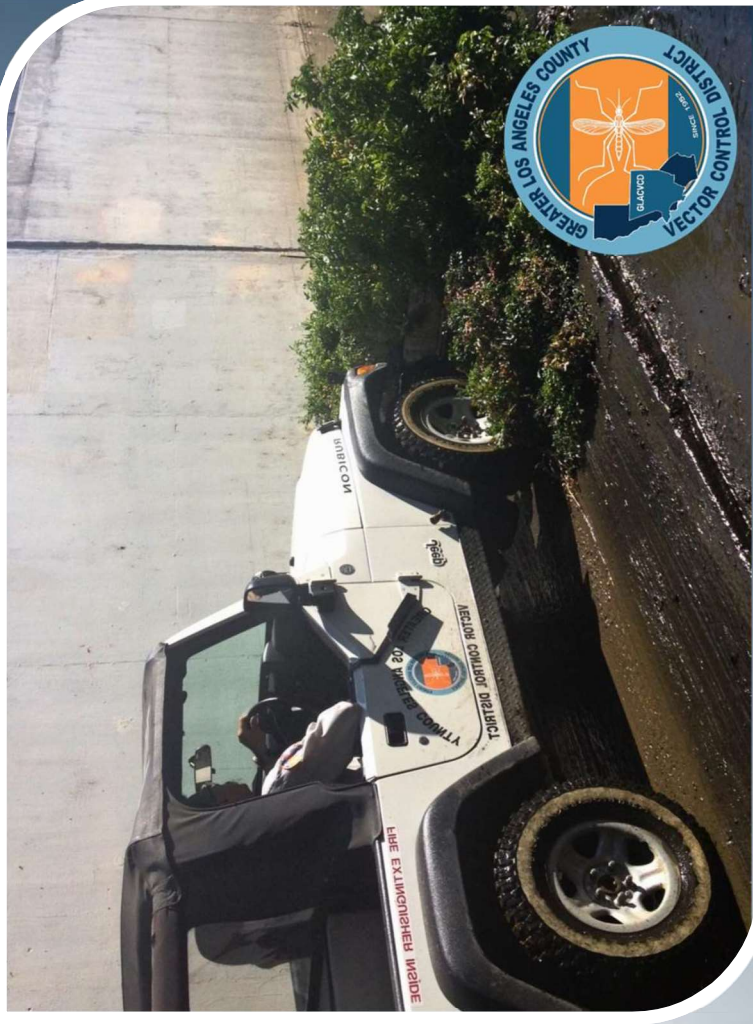


# Operations | Low Visibility

Underground Storm  
Drain System (USDs)

Flood Control  
Channels & Stormwater

- Conveyance Systems
- Water Storage Systems





# Operations | Low Visibility

Underground Storm  
Drain System (USDS)

Flood Control  
Channels & Stormwater

- Conveyance Systems
- Water Storage Systems





## Vernon

Greater LA County Vector Control District

Activities: 1/1/2022 - 12/31/2024



# Mosquito Sources in Vernon (2024)

- 103 Residential & Public
- 0 Ponds & Pools
- 417 Storm Water Structures and Drains

# Scientific & Technical Department

Utilizes innovative field and laboratory techniques to monitor mosquito, black fly, and midge populations as well as vector-borne diseases.



Black Fly Surveillance



Mosquito Trapping



Mosquito Identification



Dead Bird Testing



# Sterile Insect Technique (SIT)

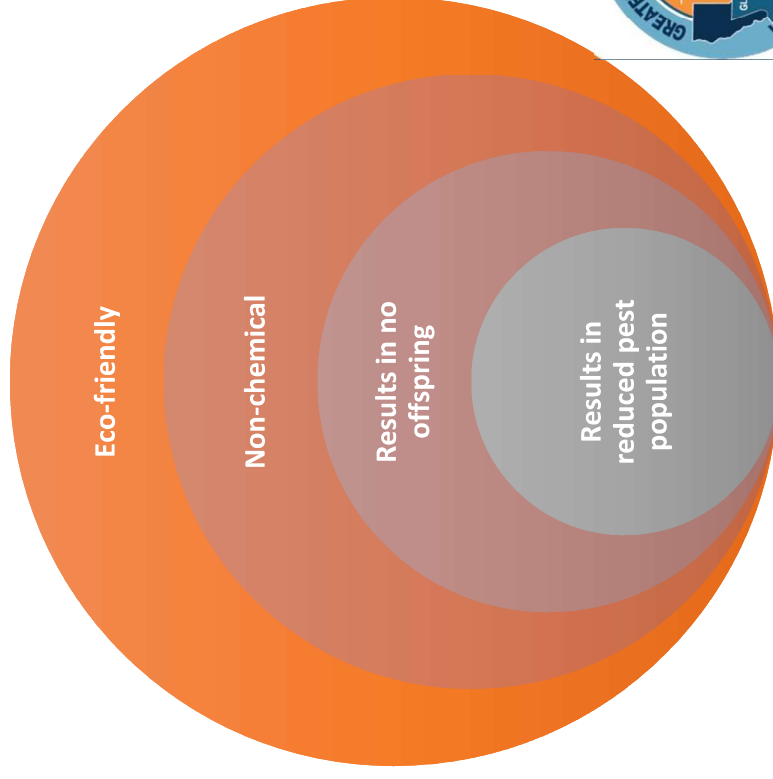
X-ray sterilization of  
male mosquitoes

Release of sterile  
males over time

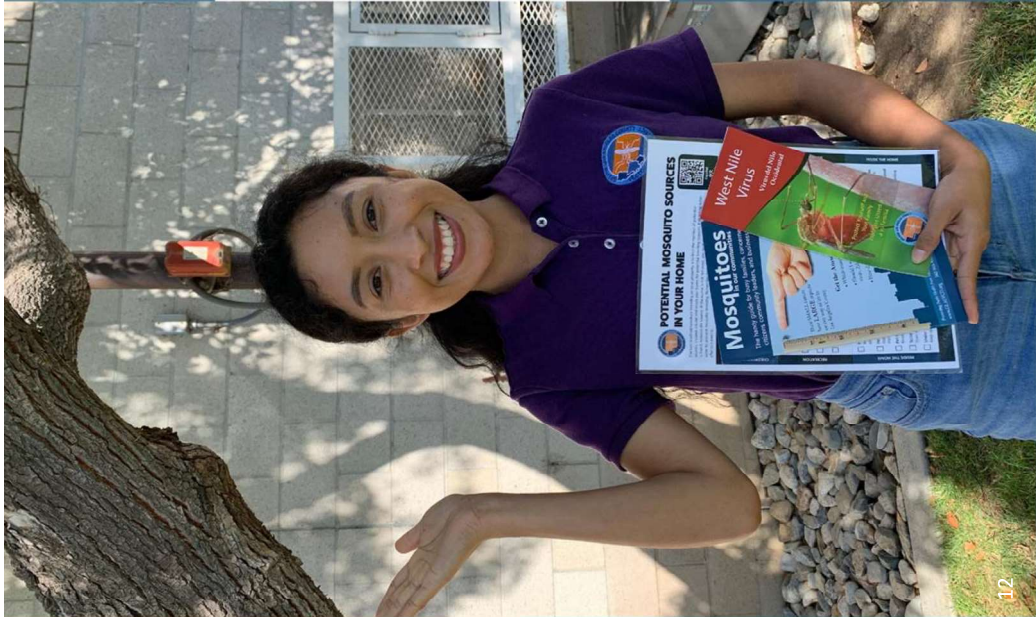
Sterile males to mate  
with wild females



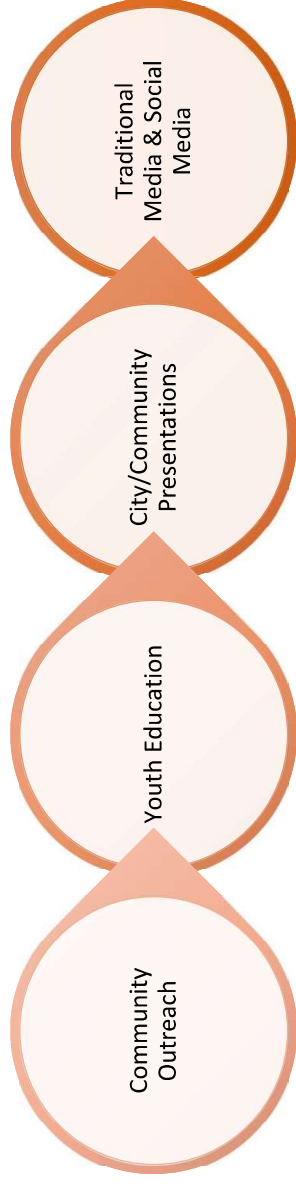
# SIT Benefits







# Communications Department



- Promotes public awareness of the District services
- Educates the public about mosquitoes and vector-borne diseases



# Partner With Us

Follow & share GLACVCD updates from social media accounts on city platforms

Encourage residents to call & visit District website to submit service requests

Add a District tab to city websites and a rolling item on city marquees / newsletters





# Thank you!

## Greater Los Angeles County Vector Control District

### Contact

Website | [www.GLAmosquito.org](http://www.GLAmosquito.org)

Phone | (562) 944-9656

Email | [communityaffairs@glacvcd.org](mailto:communityaffairs@glacvcd.org)

### SOCIAL MEDIA

@GLAmosquito

*Staff is available to answer any questions*